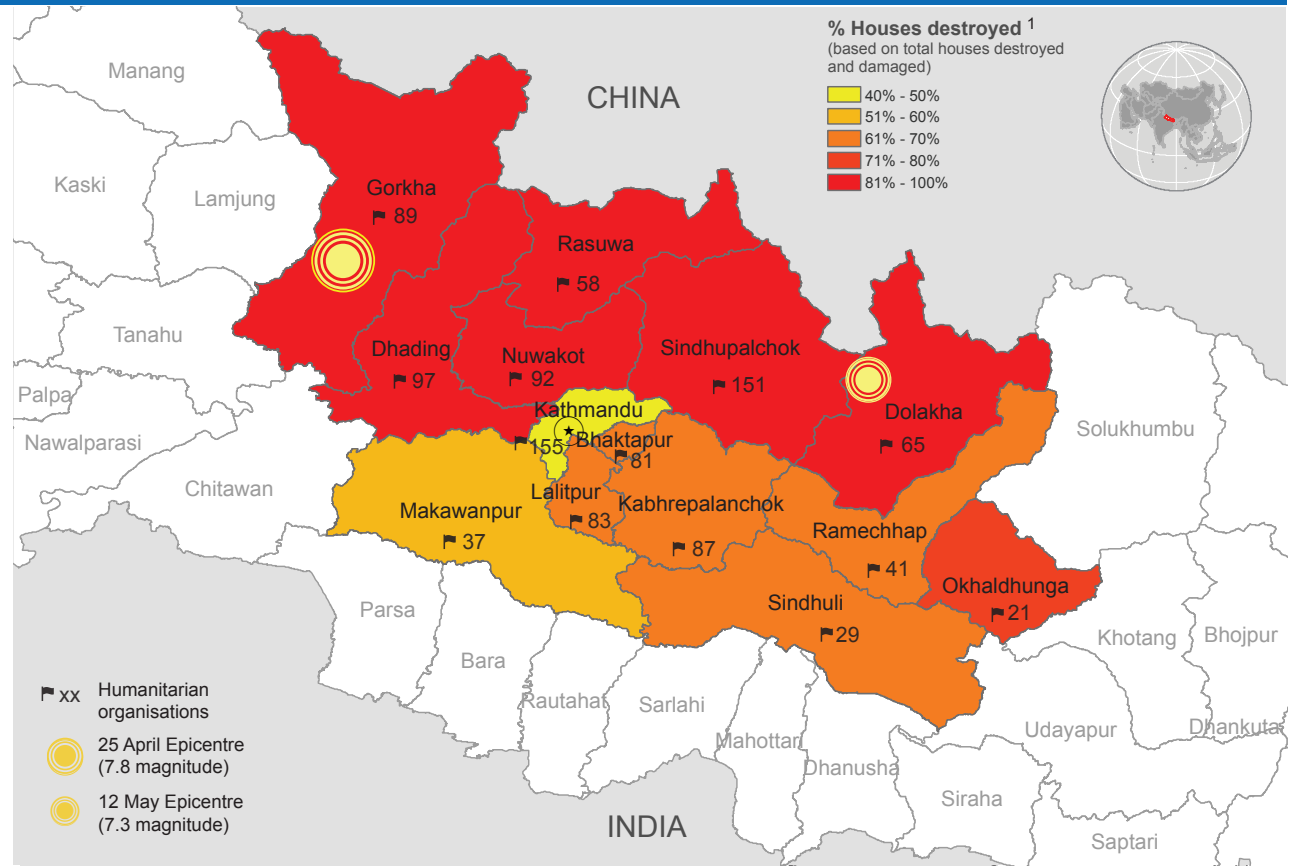
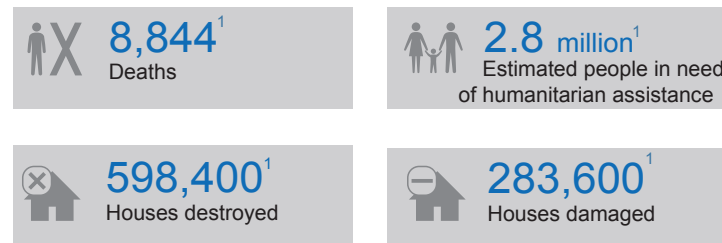


NEPAL Earthquake: Humanitarian Snapshot (as of 07 July 2015)

Two months after the first of the two devastating earthquakes hit Nepal, some 2.8 million of the people affected still require vital humanitarian assistance. With nearly 600,000 houses destroyed and another 280,000 damaged by the quakes, hundreds of thousands of people continue to remain in makeshift shelters.

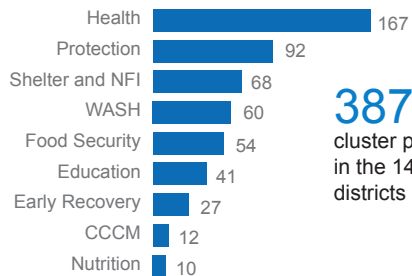
Aid agencies estimate that more than 1 million people continue to require food assistance to meet their daily dietary requirements, while 500,000 people need continued support to protect and restore their livelihoods. More than 900,000 people depend on sustained provision of water and sanitation, including 2,000 communities relying on water filtration kits provided by humanitarian partners.

Access to safe temporary learning spaces is still required for some 370,000 children. Provision of relief depends now even more on the logistical support with the monsoon season having started.



OPERATIONAL PRESENCE (as of 23 June)²

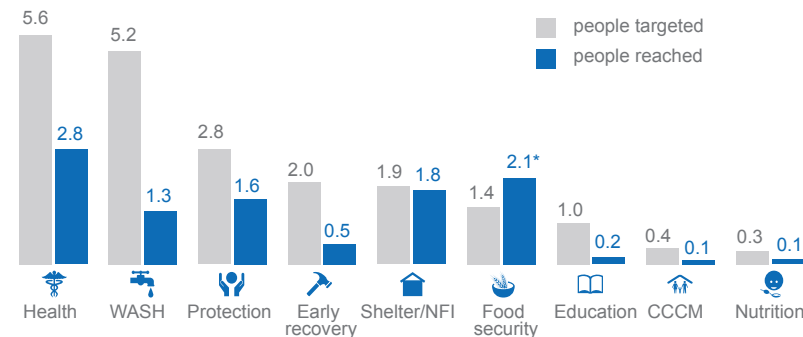
Number of organisations by cluster



387
cluster partner agencies in the 14 most-affected districts

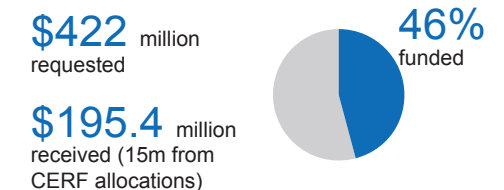
ACHIEVEMENTS VS TARGETS²

People targeted and reached by cluster (in million)



FUNDING STATUS (as of 07 July 2015)³

UN Flash Appeal requested \$422 million to respond to the humanitarian needs. As of 07 July, \$195.4 million including \$15 million from the CERF** has been contributed.



**CERF: UN Central Emergency Response